

**EXPLORE
DISCOVER
DEVELOP
REPEAT**



Company Profile



ABOUT US



PT Geo Fix Indonesia is a national multi-commodity exploration and mining services company. With a band of highly skilled professionals as our core, GeoFix committed to maintain the highest standards and best practices, comply with the codes and related policies, never compromise on safety, health and environment in doing our business while achieving our objectives in an honest, transparent and accountable manner. In and with GeoFix we EX-PLORE to DISCOVER, the discoveries we made must be able to be DEVELOPEd and WE strive to REPEAT it!



VISION

MISSION





VISION

To become a world-class center of excellence in One Stop Global Exploration and Project Development Services and Project Proprietary.

MISSION

We support all scopes of mining business to unravel their proficiency to fix, build and enhance their asset's value through Explore, Discover, Develop and Repeat with the provision of innovative, reliable, high-quality services and solutions whilst nourishing state-of-the-art digital platforms and ecosystems in the mining industry.

TAGLINE

Supporting the mining industry through multi-commodity expertise with galvanized spirit and passion to Explore, Discover, Develop and Repeat!.



EXPLORE

Exploration success is manifested by a (mineable) discovery, therefore we passionately explore by collaborating multi-discipline expertise for nothing but to discover

DISCOVER

Nourishing breakthrough in the enhancement of geoscience and technology-based exploration to make mineable ore deposit discoveries



DEVELOP

The discoveries we made must be able to be developed!

REPEAT

Strive to make many more (other) discoveries, and repeat again.

OUR STRENGTH



Thing That Make Us Great



ONE STOP SERVICES EXPLORATION TO MINING

GEOFIX is multi-disciplinary and multi-commodity exploration & mining consultant.



PROVEN TRACK RECORD

We have thinkers and doers with a proven and undoubted track record that can give you the optimum solution.



DIVERSE & HIGHLY EXPERIENCED PROFESSIONALS

We are committed to maintain the highest standards and best practices.



BEST PRACTICES COMPLIANT

Always comply with the code and related policies. We are committed to implementing good corporate governance.



**HOW DO WE
EXECUTE
OUR STRATEGY
AND DELIVER OUR
GOALS**

- Reputable expertise with passion.**

- Teamwork with state-of-the-art technical and non-technical capabilities.**

- Consistent and persistent management and strong stakeholder support.**



GUIDED BY

OUR CHARTER

VALUES

RESPECT

REPUTATION

**TECHNOLOGY &
INNOVATION**

BREAKTHROUGH

QUALITY

INTEGRITY



OUR SERVICES

PROJECT DUE DILIGENCE



Geo Fix Indonesia provides reliable and comprehensive technical and non-technical evaluation services to support your company for future investment in exploration & mining projects. We support your company by implementing the highest standards in identifying opportunities and mitigating risks.

GENERATIVE & GREENFIELD EXPLORATION



Geo Fix Indonesia implements best practices in field-oriented, geoscience, and technology-based exploration to deliver a finest end-to-end exploration services in identifying and generating new exploration project opportunities, delineating exploration drill targets, aiming mineable ore deposit discovery.

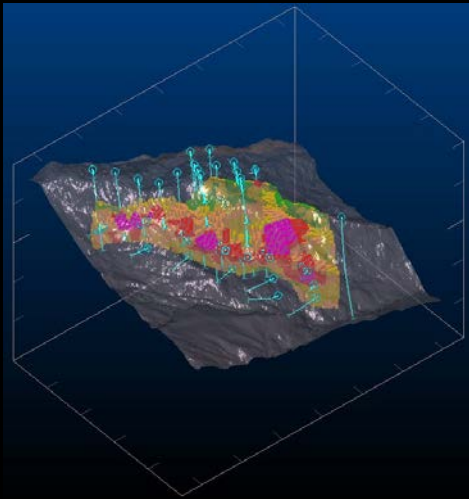
MINE GEOLOGY & BROWNFIELD EXPLORATION



Geo Fix Indonesia offers Mine Geology & Brownfield Exploration services to your company for optimizing production through comprehensive and efficient pit mapping & grade control, implementing stockpile management best practices, improving resource block model to production reconciliation and unraveling your near-mine upside exploration targets.



RESOURCE & RESERVE ESTIMATION



Our experts are competent or qualified persons as defined by both national and international mineral resource and reserve reporting codes. Maximizing value creation of the company's resources through our best effort in implementing the latest and proven concepts and methods of estimation. Strong understanding of the ore deposit geology and mastering advanced geostatistical concepts are embedded to our resource and reserve estimation team in supporting your project to advance from exploration - feasibility study and optimizing your mine operation.

METALLURGY AND GEOMETALLURGY



Geometallurgy is a cross-discipline approach, combining geology, metallurgy, and mine planning with aim to improve the fundamental understanding of resource economics (CODES). Our team implements a scientific discipline in which geological data, mining data, and processing data are co-analyzed to optimize resource profitability which in the end should maximize the value of geology in (your) company's mining operations.

DRONE LIDAR & GEOPHYSICS SURVEY



Geo Fix Indonesia aims to create affordable high-precision aerial lidar survey-mapping drones and high-precision solutions for aerial surveys. Offer and provide smart, powerful, ready to fly and easy-to-use DJI Matrice 600 drones with additionally installed Velodyne Puck Lidar sensor (previously VLP-16) is the highest-value sensor on the market, and GNSS receiver connected with modified and calibrated camera, to get high precision surveying and accurate and powerful mapping, high accuracy photogrammetry data up to 3 cm accuracy in XYZ, orthophoto plans, digital elevation models, digital terrain models, and high-precision 3D models. We perform topographic and geodetic using Ground Control Points (GCP), Geophysics Magnetic, GPR, Multispectral, Hyperspectral, and thermal sensor mapping.

PROJECT MANAGEMENT



Geo Fix Indonesia provides holistic project management services in the mining sector uniquely designated as your projects' needs.

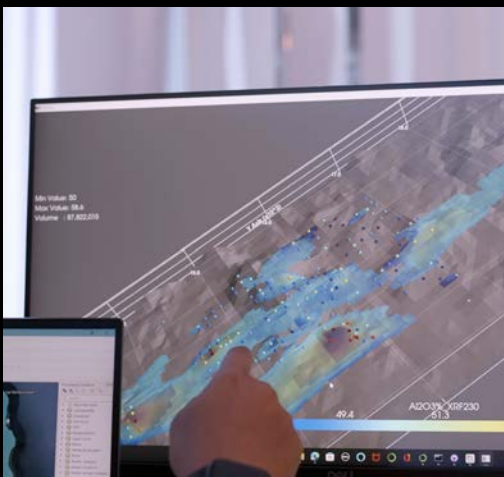


BIG DATA & AI-BASED TARGET GENERATION



We created complex algorithms based on the discussions and inputs with/from our economic geology and mine experts. We use AI technology such as ML as support to complete our algorithms based on the complexity. A specialized AI we created not only can adapt based on the data and logic behind the exploration target generation but also our application can satisfy the expectation of reputable geologist experts with many years of experience in framework study and target generation exploration programs.

DIGITAL EXPLORATION AND MINING ECOSYSTEM



We integrate our software engineers, geoscientists, and mine engineers to form a digital exploration and mining digital platforms; use geological and mining as a core behind the aim to create applied technology that will make the exploration to mining ecosystem faster, more reliable, and more direct yet specific in identifying handling and solving the problem. We create big data in the mining industry from exploration to mine operation that can be connected for multi-purpose and become the mining ecosystem 4.0 and beyond.

COMPLETE ASSISTANCE

For Your

COMPLETE EXPLORATION & MINING

Solution





OUR MANAGEMENT



STJ Budi Santoso

President Director

STJ Budi Santoso has a total of 26 years of national and international work experience in exploration, project development and operation for both principal technical and senior management levels in several major mining companies such as Western Mining Company, Cyprus Amax, Phelps Dodge Corp, Freeport-McMoRan, BHP Billiton, and J Resources.

STJ Budi holds a Master of Economic Geology from the University of Tasmania. He is an exploration geologist with strong field and sound technical background with a proven track record of discoveries and resources expansion in a wide range of commodities, mostly in major deposit types of gold, copper, and cobalt.

STJ Budi is a member of AusIMM, SEG, Lindgren Awards Committee of SEG, IAGI (CPI-IAGI), Joint Committee (Komers) KCM IAGI-PERHAPI and trusted to be the Chairman of MGEI in the second period from 2021 until 2024.



Bowo Kusnanto

Chief of Operating Officer

Bowo Kusnanto has over 25 years of experience in the resources sector including 15 years in exploration managerial roles of various both ASX, BEI listed companies; such as Freeport Mc Moran, Zinifex, Perilya, Oxiana/M-MG, Tiger Realm Minerals, J Resources, and Asiamet Resources. Kusnanto holds a bachelor in geology from UPN, he is an exploration geologist with solid technical background in a wide range of project stages from greenfield, brownfield, and operating mine with proven track records for every project and position he held either in Indonesia or overseas. Bowo is a competent person for exploration reporting of gold, copper and its associated minerals.



Gyaista Sampurno

Chief of Geological Officer

Gyaista Sampurno has over 25 year's experience in the resources sector including 5 years as Chief and Principal Geologist of J Resources. Sampurno is a strong field-oriented and technology-literate exploration geologist with a solid overseas assignment background. He graduated from ITB in 1996 and since then had been taking field technical roles in Genex, Greenfield and Brownfield exploration for deposit types of LSE, HSE, Porphyry and IOCG mostly with Newmont and J Resources Nusantara.



HIGHLY EXPERIENCED
PROFESSIONALS



David Iswanto

Senior Geologist Copper
and Gold

David Iswanto is a field-oriented with rounded experience Geologist in Generative and Greenfields to Brownfields detailed Exploration work equipped with strong understanding of various gold, copper, and base-metal deposit including Porphyry, High Sulphidation Epithermal, Intermediate Sulphidation Epithermal, Low Sulphidation Epithermal, Sediment Hosted, Skarn, Orogenic, mostly for gold, copper and other base-metal deposits. He has significant track record as part of Discovery Team at several prospects and significant contribution on incremental resources in several operation Gold Mines in Indonesia.



Arief Eko Prihandoyo

Senior Geologist Coal &
Mineral Industry

Arief is a strong field oriented senior geologist with 12 years experience in mastering geological understanding, conceptualizing and executing exploration for complex deposits within greenfields, advanced and brownfields exploration program. He is a part of the successful technical team at Pani Project, Doup, Bolangitang and the generative exploration program in J Resources.

TECHNICAL TEAM



Ahmad Hidayat

Senior Geologist Nickel
and Bauxite

Ahmad is a strong field oriented senior exploration geologist with 12 year round experience in exploration with strength in QAQC, generative exploration and technical due diligence for multi-commodity mostly for Nickel laterite, Bauxite and Coal.A



Muhaemin B Sutami

Senior Mineral Resources

Muhaemin B Sutami is an experienced mineral resource specialist with more than 15 years experience. He is a member of AusIMM, and also a Competent Person Indonesia CPI-IAGI qualified resource estimation of primary gold of epithermal and intrusion related deposits. He also possesses broad commodity experience including precious metals, nickel laterite, bauxite, base metals and iron ore. He has extensive experience of mineral project in Indonesia throughout resource estimation, mine geology, project feasibility study and been working in some companies in Indonesia e.g. Antam and J Resources.

TECHNICAL TEAM



Tomy Taladin, S.T., M.B.A
Senior Metallurgist Gold and Nickel

Tomy is a senior metallurgist with more than 16 years of experience in gold and nickel commodity. He is familiar with geometallurgy study in some complex gold-copper deposits in collaboration with geologist and mine engineer for greenfield, brownfield exploration projects and operating mine. His experience in leading metallurgy laboratory research and development will guarantee to a high standard of any metallurgical test work of analysis and work execution he is involved. Tomy is familiar handling heap leach, CIL and floatation processing method in gold and hydro-metallurgy in Nickel.



Patar Simbolon, B.Eng.
Senior Mine Engineer Copper
and Gold

Patar Simbolon is a senior mine engineer with more than 15 years of experience in the surface (open cut/open pit/quarry) mining operation and consulting. His strong background is in coal and metal covering mine planning, drill and blast, mining fleet and its operation, production reporting, project cost and people management. Patar is familiar with mining software packages such as Mincom Minescape, Minex, Surpac, Whittle, Datamine, XPAC, Talpac, Micromine, and AutoCAD. He is certified as a Competent Person Indonesia (CPI) under the KCMI Code 2017 for Reserve Estimate Sign-off for Gold (and other related minerals) commodities

TECHNICAL ASSOCIATE



Saut Simbolon, M.Sc.

Senior Resource Geologist
Copper and Gold

Saut is a senior mine and resource geologist with experiencing from greenfield to brownfield geologist exploration, and project development with extensive in mine geology and mineral resource experience over the past 24 years with a solid background in mineral resources, mine production and project development in a small and large Au-Ag epithermal low sulphidation, and Au orogenic, Au high nugget narrow vein deposits, Cu-Au porphyry deposits, Cu-Zn base metal deposits, iron ore deposits. He is familiar with Mineral Resource Estimation (Linear and Non-Linear Estimation) for Underground and Open Pit mining using Vulcan, Isatis, and Supervisor mining software including estimation evaluations/review and audits, desktop study and due diligence. He has strong international assignments and has worked with Newmont, Oxiana, SRK, Quantitative Group, Evolution Mining and MMG. He is a competent person CP (Geo) AusIMM for Mineral Resource Technical reporting for annual mineral resource report to ASX (Australia Stock Exchange).



**Kartika Dwi
Handayani**

Principal Geologist Coal

Kartika Dwi Handayani is an experienced senior coal geologist with more than 25 years experience covering various roles both technical and managerial in major national and multinational mining companies and mining services companies. Her experience includes detailed technical exploration work in greenfields, brownfields, resource estimation, mine operation, exploration project management and complex technical due diligence. She is resource geologist, member of AusIMM and is a competent person under JORC code for coal Resource estimation reporting and sign-off.

TECHNICAL ASSOCIATE

Contact Us



Head Office

Talavera Office Park, 28th Floor,
Jl TB Simatupang Kav 22-26,
Cilandak, South Jakarta
12430



Workshop

Amaryllis Kemang Townhouse
Jl. Bangka XI A No.5, RT2/RW10,
Pela Mampang, Mampang Prapatan,
South Jakarta
12720



(021) 2270-7244



info@geofix-id.com